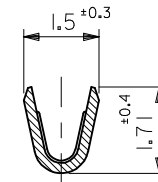
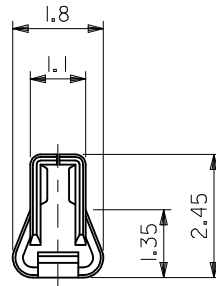
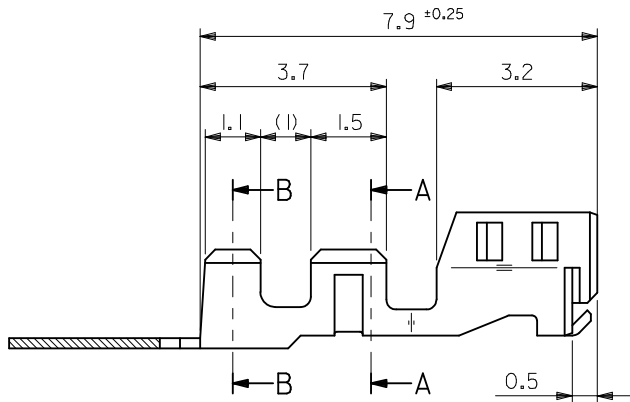
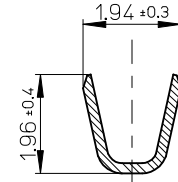


注記
NOTES

1. 適合ハウジング : 51103 シリーズ
APPLICABLE HOUSING : 51103 SERIES
2. 材料 : リン青銅, 錫メッキ材 (t=0.2)
MATERIAL : PRE-TINNED PHOSPHOR BRONZE (t=0.2)
3. 適用電線サイズ AWG #26
WIRE SIZE
被覆外径 $\phi 0.93 \sim 1.03$
INS RANGE
4. ELV及びRoHS 適合品
ELV AND RoHS COMPLIANT



断面 A-A
SECT. A-A



断面 B-B
SECT. B-B

REEL	50351-8010	連鎖状 CHAIN
PACKAGING SPEC.	オーダー番号 ORDER NO.	形態 FORM
CONNECTOR SERIES NO. 50351-8*10		

REVISED EC NO.: J2017-0534 DRWNGS: 2017/04/20 CHKD: APPR:MSASAO 2017/05/26	GENERAL TOLERANCES (UNLESS SPECIFIED)		DIMENSION STYLE MM ONLY		SCALE ---	DESIGN UNITS METRIC	THIRD ANGLE PROJECTION
	0.25 UNDER	+	DRAWN BY	DATE	TITLE		
	0.25 OVER 0.5 UNDER	±	NYOSHI AKWA	2009/06/11	2.5 W/B CONN.CRIMP REC.		
	0.5 OVER 1.0 UNDER	±	CHECKED BY	DATE			
0 OVER 10 UNDER	±0.2	THARUYAMA	2009/06/11	APPROVED BY			
10 OVER 30 UNDER	±0.25	NUKITA	2009/06/11	DATE			
30 OVER	±0.3	MATERIAL NO.		DOCUMENT NO.		SHEET NO.	
ANGULAR ±3 °		SEE CHART		SD-50351-002		1 OF 1	
DRAFT WHERE APPLICABLE MUST REMAIN WITHIN DIMENSIONS		SIZE A3	THIS DRAWING CONTAINS INFORMATION THAT IS PROPRIETARY TO MOLEX ELECTRONIC TECHNOLOGIES, LLC AND SHOULD NOT BE USED WITHOUT WRITTEN PERMISSION				