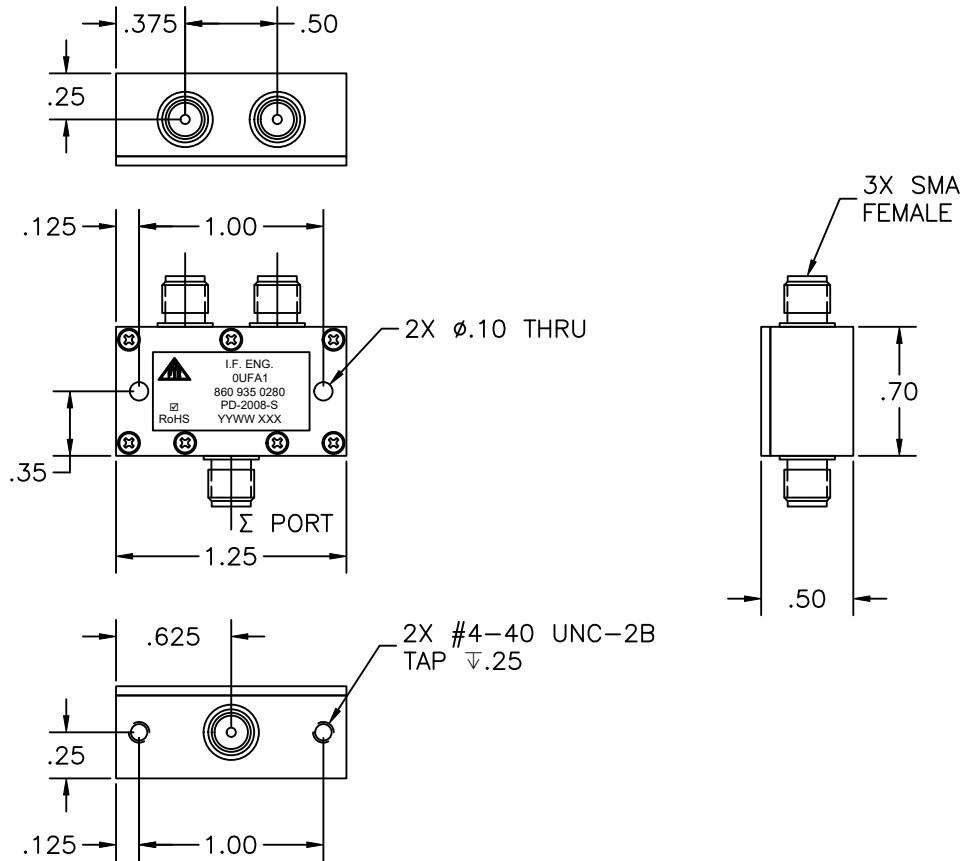


THIS DOCUMENT CONTAINS PROPRIETARY INFORMATION. ANY REPRODUCTION, DISCLOSURE, OR USE OF ITS CONTENTS IS EXPRESSLY PROHIBITED EXCEPT AS AUTHORIZED BY I.F. Engineering Corp



NOTES:

1. MATERIAL: CHASSIS & COVER ALUMINUM
2. FINISH: CLEAR CHROMATE
3. SPECIFICATION SUBJECT TO CHANGE WITHOUT NOTICE

**RoHS  
Compliant**

	THIRD ANGLE PROJECTION	DRAWN	DATE
		CL	6-11-02
UNLESS OTHERWISE SPECIFIED DIMENSIONS MEASURED IN INCHES DRAWING PRACTICES PER ASME Y14.100	ENGRG APPD	DATE	
	CL	6-11-02	
TOLERANCES ANGLES ±1/2° .XX ±.01 .XXX ±.005	MFG APPD	DATE	
	EDW	6/11/02	
MATERIAL: SEE NOTE 1	QA APPD	DATE	
	EJS	12/4/15	
FINISH: SEE NOTE 2	RELEASED	DATE	
	CL	6-11-02	

REVISION			
LTR.	DESCRIPTION	DATE	APPVL.
-	RELEASED	6-11-02	CL
A	PKG	3/23/04	
B	format/temp	9/04	LCF
C	Corr Conn	10-04	CL
D	ROTATE VIEWS, ADD LABEL	10/24/05	MJD
E	ELECTRICAL SPEC. CHANGED; UPDATED FORMAT	3/28/07	MJD
F	SCREWS ADDED TO TOP VIEW	7/26/07	MJD
G	FINISH CHANGED	10/16/07	MJD
H	'RoHS Compliant' Logo Added	2/6/08	MJD
J	TEMP. RANGE CHANGED	2/25/08	MJD
K	ELEC. SPEC. CHANGED	3/4/08	MJD
L	CHANGED PER ECN 1549001	12/4/15	MJD
M	ECO #2033002	8/13/20	MJD
N	ECO #2104002	1/21/21	MJD

ELECTRICAL SPECIFICATION TWO-WAY POWER DIVIDER		
FREQUENCY RANGE (MHZ)	20-3000	20-3000
ISOLATION (dB) MIN.	18	18
INSERTION LOSS (dB) MAX.	2.0	2.25
AMPLITUDE BAL. (dB) MAX.	±0.3	±0.3
PHASE BAL. (°) MAX.	±10.0	±10.0
VSWR MAX.		
IN	1.5:1	1.5:1
OUT	1.5:1	1.5:1
IMPEDANCE (OHMS) NOM.	50	50
TEMPERATURE RANGE (°C)	-40 TO +50	+50 TO +70

**I.F. ENGINEERING**  
3 FOSHAY ROAD, DUDLEY MA 01571

TITLE  
**OUTLINE DRAWING**  
**PD-2008-S**

SIZE	CODE IDENT NO.	DRAWING NO.	REV.
A	OUFA1	002-112-181	N

SCALE 1:1 SHEET 1 OF 1